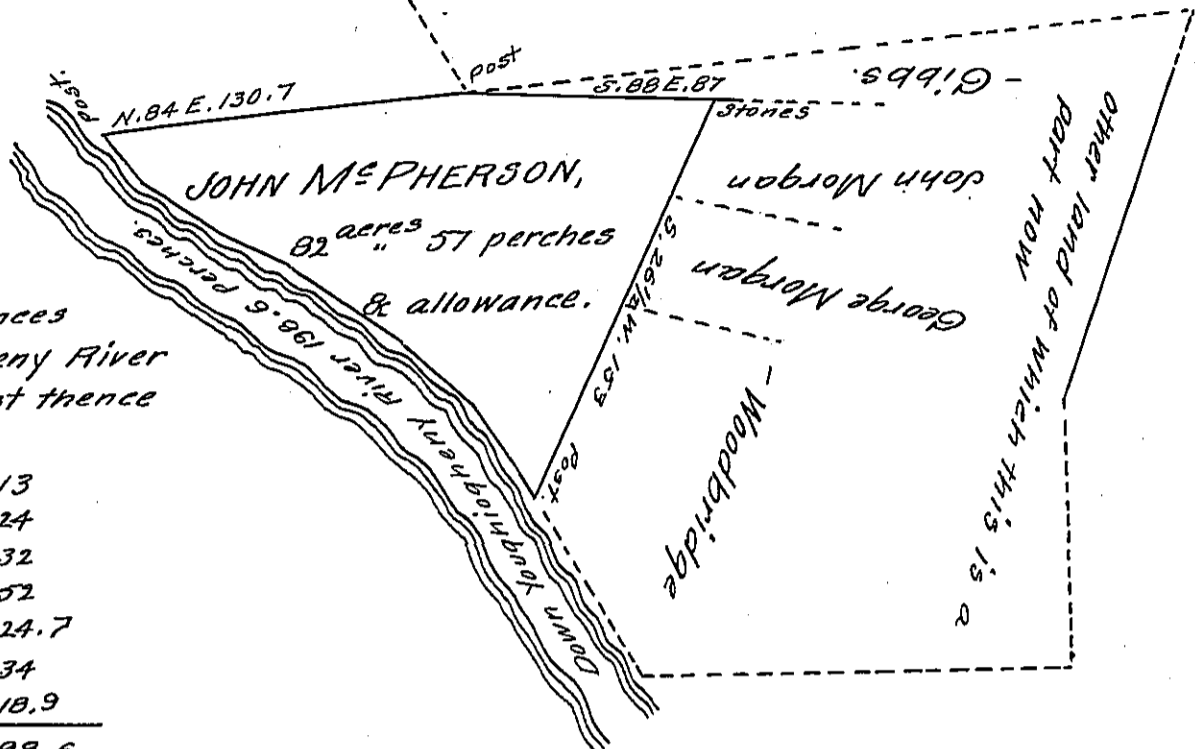


Formerly John Dorsius  
now John Niccolls Esq.

Gibbs

Beginning



Courses & Distances  
down Youghiogheny River  
beginning at a Post thence

N.	24	W.	13
N.	34	W.	24
N.	47	W.	32
N.	56	W.	52
N.	65	W.	24.7
N.	54	W.	34
N.	46	W.	18.9
Perches 198.6			

A Draught of a Part of a tract of land which was surveyed in pursuance of an Application granted to John McPherson No 1077 dated April 3<sup>d</sup> 1769 containing eighty two acres fifty seven perches and the allowance proportioned at six per Cent for Roads &c. Situate on the Youghiogheny River in South Huntingdon township in Formerly Bedford now Westmoreland County.

Surveyed March 31<sup>st</sup> 1830.

S. L. Carpenter D.S.

Gabriel Hiester Esq.  
Surveyor General of Pa.

I beleive the above to be correct.

C. Fullwood D.S.

IN TESTIMONY that the above is a copy of the original remaining on file in the Department of Internal Affairs of Pennsylvania, made conformably to an Act of Assembly approved the 16th day of February, 1833, I have hereunto set my Hand and caused the Seal of said Department to be affixed at Harrisburg, this fourteenth day of March 1906.

*Lucas R. Brown*  
Secretary of Internal Affairs.